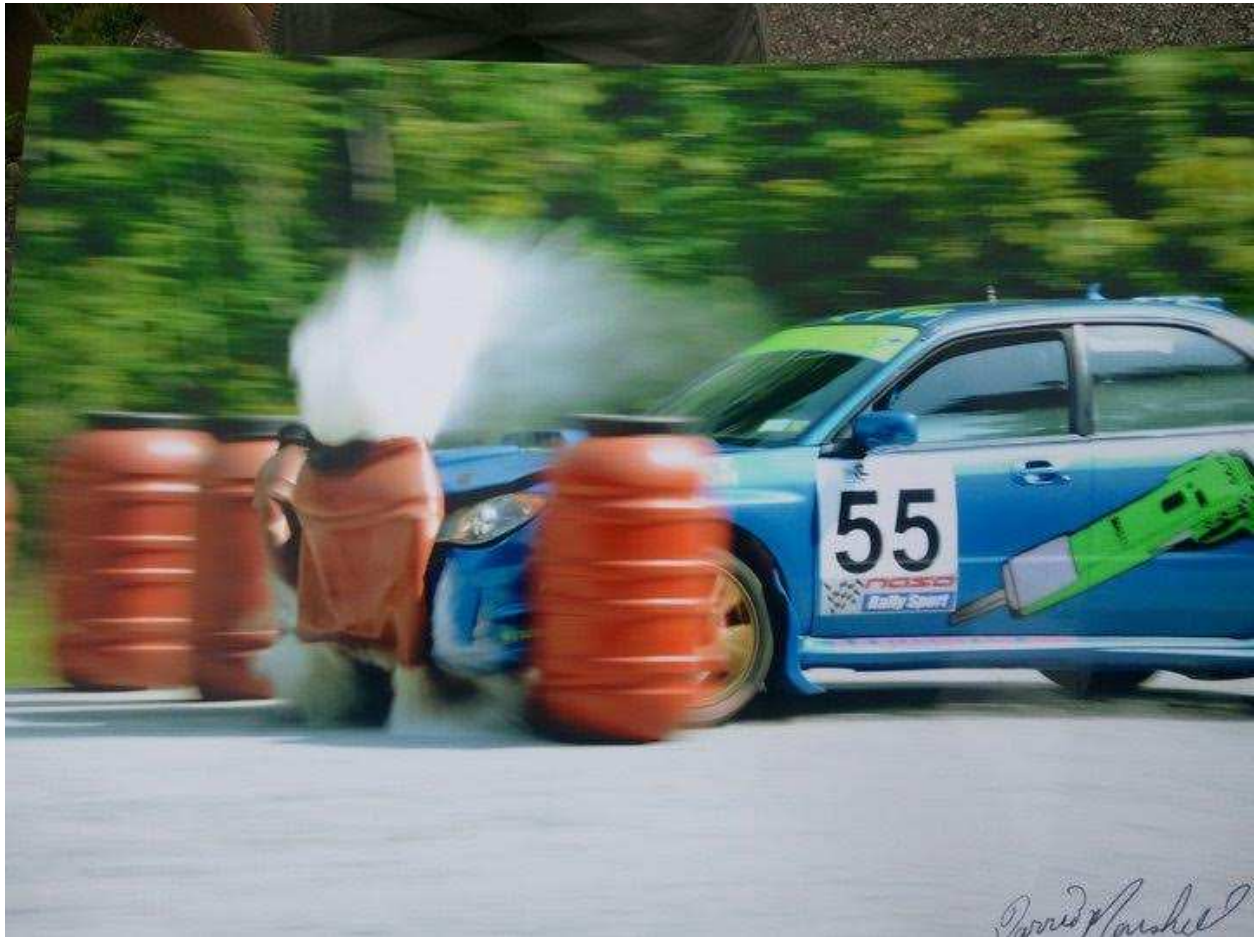


# DRIVERS: RESPECT THE CHICANE



## 2.18 Chicanes

1. Single element, designed to have the competitors leave the main road and then return. They may be used at a delta or a road junction.
2. Multiple elements, designed to have the competitors negotiate the elements without leaving the road. Each element should be 50 feet from the other elements. An imaginary straight line in the center of the road should touch each element.

Chicanes may be manned and the marshals shall be deemed Judges of Fact as to whether a competitor struck a chicane element or not. Caution signs should be placed 150' to 300' feet before a chicane.

**Time Penalties: 5 minutes for a flagrant violation of purposely shorting or deviating from the course, including bypassing a chicane. 12 seconds for striking one element of a chicane.**

**HIGH DESERT TRAILS** – Watch for the two chicanes on Kelso Valley Road. The first will be at a road junction after the start of Kelso North (Type 1). The second will be on the long straight, marked, manned, and video-taped (Type 2).